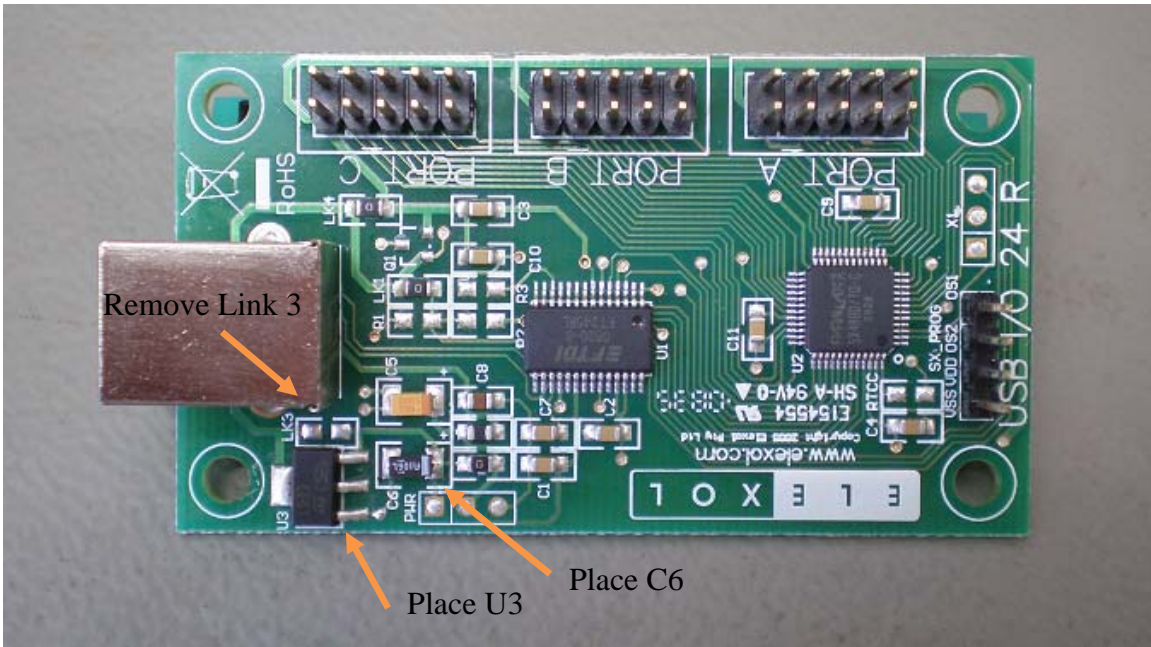


How to configure the USB I/O 24 R PCB for 3V3 I/O powered configuration



3V3 I/O Powered Option

To run USB I/O 24R in 3V3 Powered mode

1. Remove Link 3
2. Place components C6,U3

Where

C6 = 10uF 10V Capacitor ([293D106X9010A2TE3](#)),

C6 Mouser Part No: [74-293D106X9010A2TE3](#)
Digikey Part No: [718-1121-1-ND](#)

U3 = LDO 3V3 800MA Voltage Regulator (LD1117S33TR)

U3 Mouser Part No: [511-LD1117S33](#)
Digikey Part No: [497-1242-1-ND](#)

The SX48 has been programmed for a Brown Out Detect of 2.6V. So reprogramming of the unit is not required.